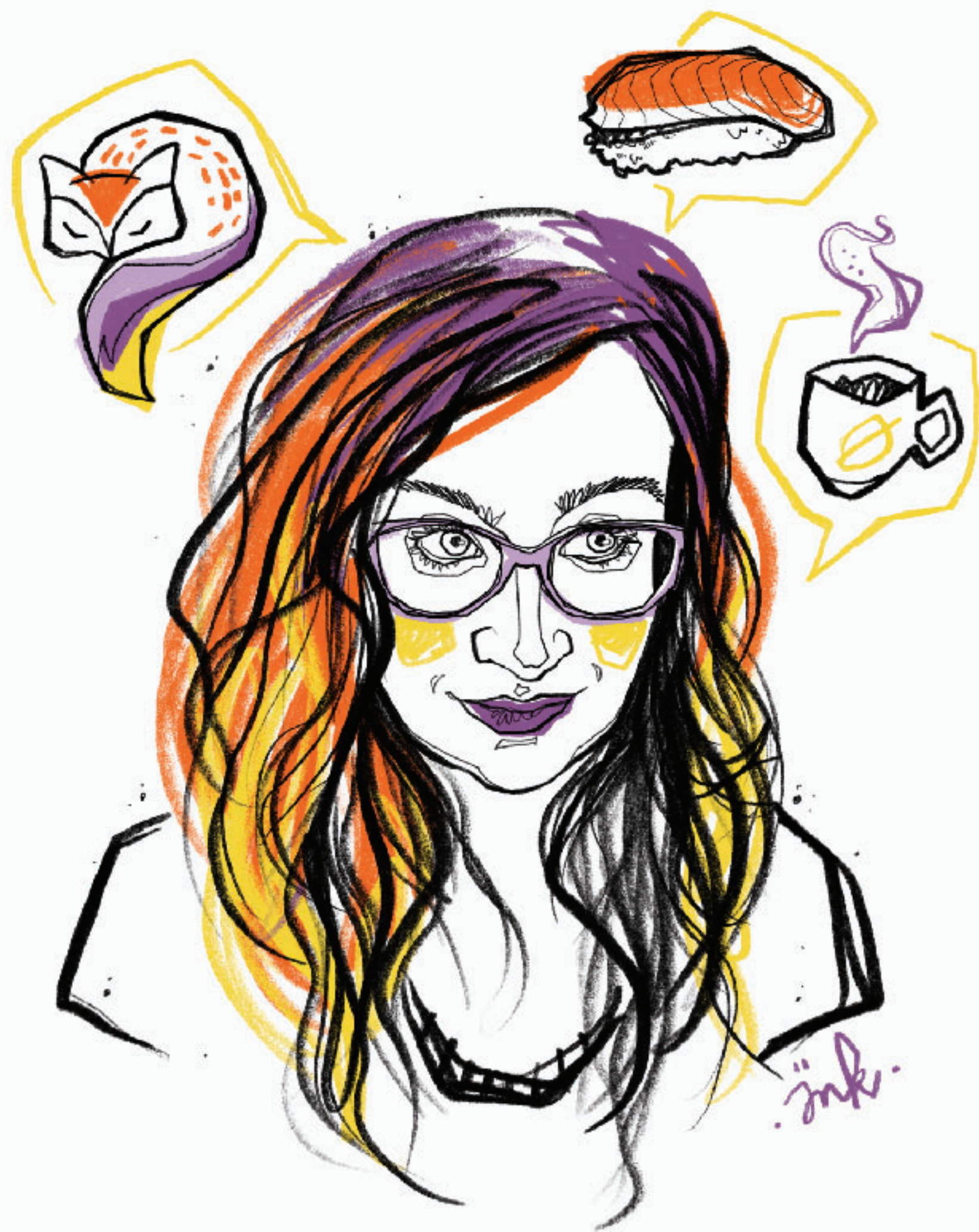




# + A Designer's Guide to Documenting Accessibility & User Interactions



# Stéphanie Walter.

---

[stephaniewalter.design](http://stephaniewalter.design)

[@WalterStephanie](https://twitter.com/WalterStephanie)

---

User **Researcher** & UX **Designer**

Mobile expert. Pixel & CSS Lover





Why fix it,  
when you can  
design and  
build it right to  
start with?





# Who should document accessibility?





# Project Managers:

---

Define accessibility requirements  
at project level (AA, AAA, etc.)



# Developers & Accessibility experts

---

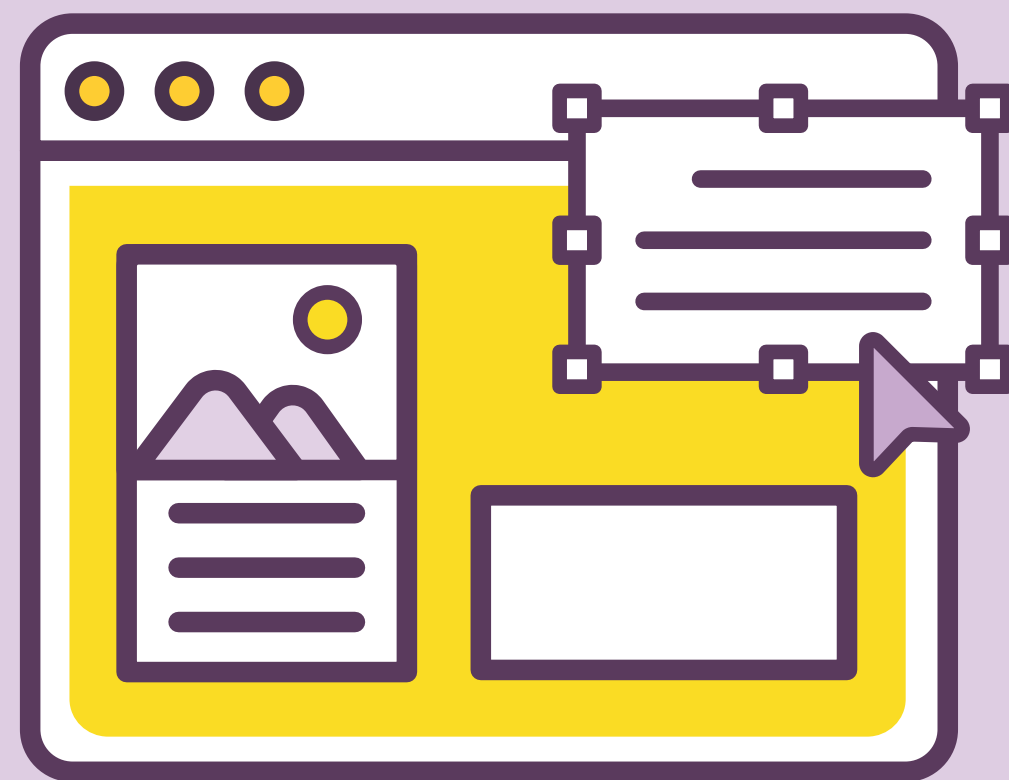
Document technical  
implementation (correct markup,  
ARIA roles, landmarks, etc.)



# Testers / QA Team

---

Define and document accessibility test cases.



# Designers

---

Design and document how it works, what it looks like, but also navigation, the “hidden” interactions and what assistive technologies should announce

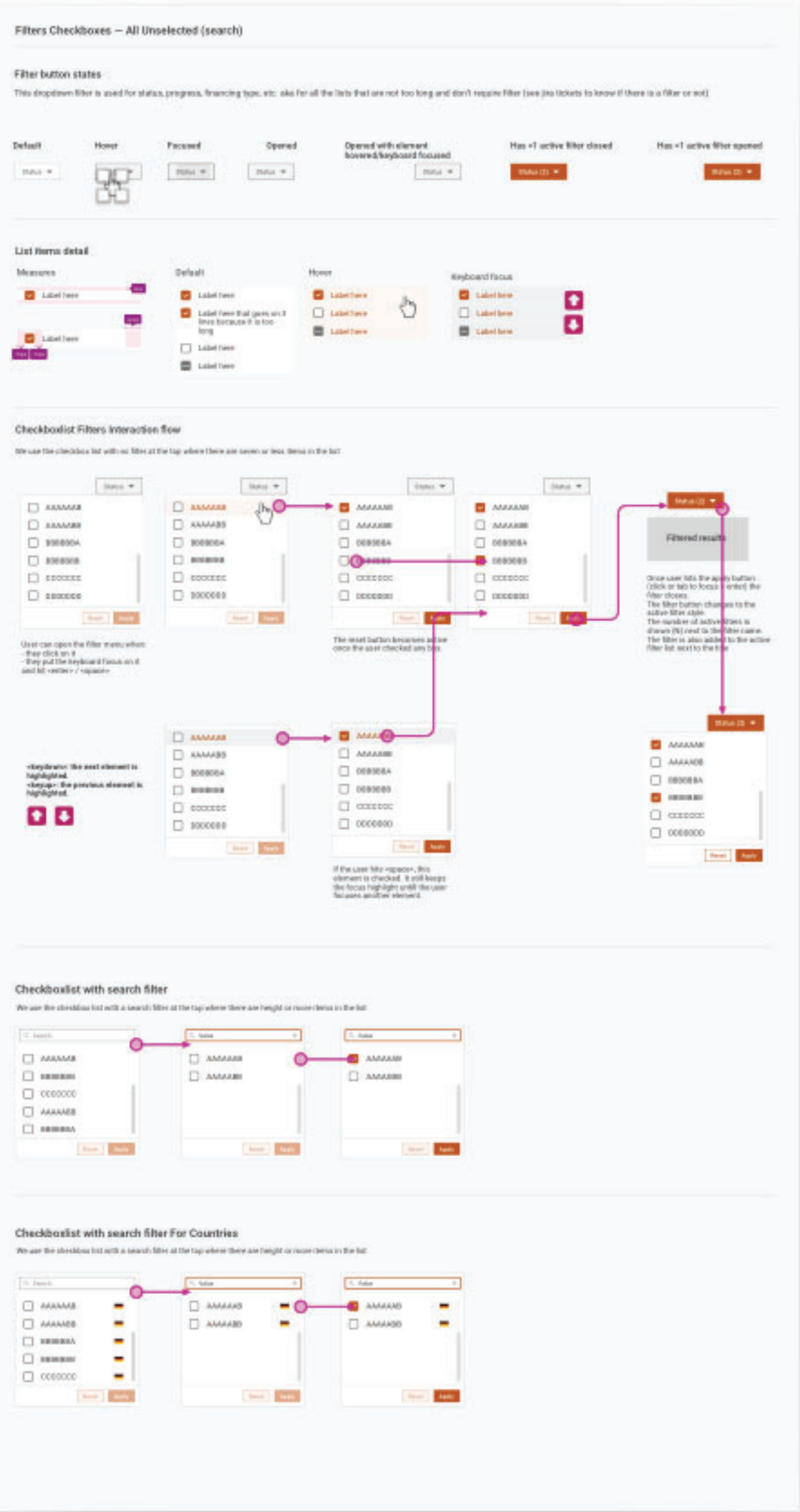




# How and Where should I document?



Determine the best  
**format** with the team



x\_Sp.../Back

x\_Sp...edge

x\_Sp...Down

x\_Sp...rward

x...d x...c x...y  
1 1 <X>

x\_S...llleft

Text Goes here  
Text Goes here



# Annotations and detailed specs in separate design system Sketch pages





My Dashboard

My Planning

My Portfolio

My Preferences

Search landing pages

This section controls the default type of page you arrive on when you click on operation, contract or counterpart link in the search.

Operations

Default page

Overview

Contracts

Default page

Allocation Summary

Counterparts

Default page

Overview

Scopes

This section controls the default scopes for different pages and tiles.

My Planning

Default scope

My Operations/Contracts

My Portfolio

Default scope

My Operations/Contracts

Homepage widgets

If I change homepage widget scope:

☒ Keep that scope as new default for that widget

Data display

This section controls the default display of tiles that have table and graph content.

Table / Graph default display

☒ Tables

☐ Graphs

If I change one specific tile display:

☒ Keep that table/graph as default for that tile

Planning

This section controls the default options related to the planning functions.

Next deadlines

Change the delay before the Dashboard widgets and My Planning highlights next event. (default: 45 days)

Next Deadline

45 days

Calendar

This section controls the default options related to the calendar functions.

Event order

Change the order of the events in all the calendars

☒ Older first

☐ Newer first

09.01.00.User-pref--default--annotation

My Dashboard

My Planning

My Portfolio

My Preferences

Search landing pages

This section controls the default type of page you arrive on when you click on operation, contract or counterpart link in the search.

Operations

Default page

Overview

Contracts

Default page

Allocation Summary

Counterparts

Default page

Overview

Scopes

This section controls the default scopes for different pages and tiles.

My Planning

Default scope

My Operations/Contracts

My Portfolio

Default scope

My Operations/Contracts

Homepage widgets

If I change homepage widget scope:

☒ Keep that scope as new default for that widget

Data display

This section controls the default display of tiles that have table and graph content.

Table / Graph default display

☒ Tables

☐ Graphs

If I change one specific tile display:

☒ Keep that table/graph as default for that tile

Planning

This section controls the default options related to the planning functions.

Next deadlines

Change the delay before the Dashboard widgets and My Planning highlights next event. (default: 45 days)

Next Deadline

45 days

Calendar

This section controls the default options related to the calendar functions.

Event order

Change the order of the events in all the calendars

☒ Older first

☐ Newer first

We access this page by clicking on user profile pic

This part controls where the user arrive when they click on a link. Only search results are impacted

This part controls default scope in my planning and portfolio. If user changes in then in those pages, the change are reflected here as well

This is to controle default scope of each widget on homepage. Default is checked: if a user changes scope of a widget, we keep that new scope when they come back

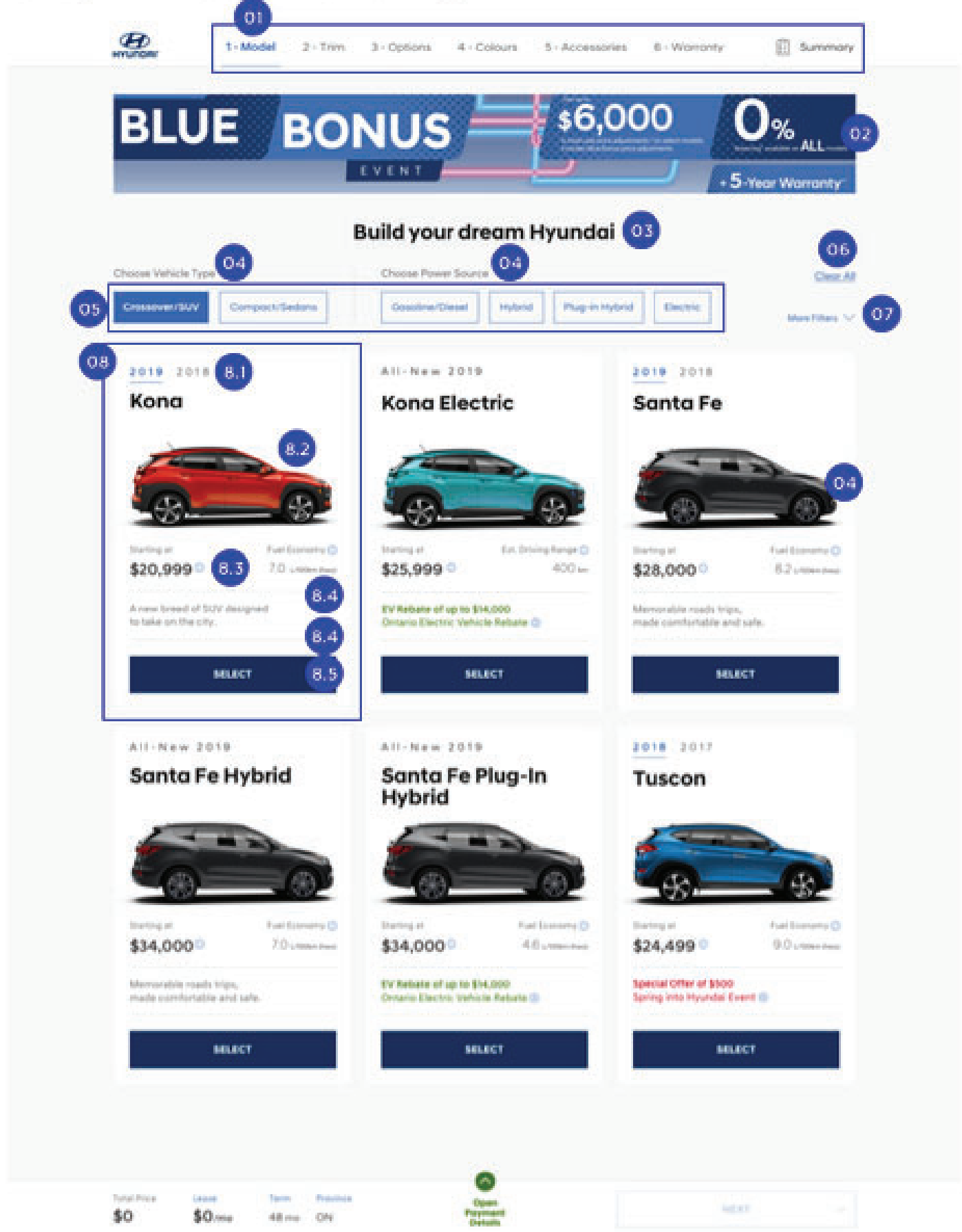
Default for all tables (for the moment only applies to utilisation status).

This is for: if the user chose tables BUT changed one tile to graph, that one tile is still graph when they come back (checked by default as well)

Options:  
30 days  
45 days  
60 days  
90 days  
120 days

Annotations  
directly on a  
second mockup

## Step 1 Model: Landing



**NOTE: (AR) = Accessibility Requirement**

### 01 Stepped Navigation

- This element will display the user's current step in the process as active (in blue) and all other states as either inactive or active (depending on what step they are at).
- **Note:** The user must select a model before they can move onto the next step. Hence initially, all other steps following step 1 are disabled as shown in this example. But if the user has advanced past step 2 wherein all steps are enabled, and they come back to this first step, the steps will all remain enabled unless the user selects a new model which would be like starting all over again.

- (AR) For screen reader users, the screen reader should say something like "[Link] Step 1 of 6 Model".

### 02 Banner

This space is reserved for a banner.

### 03 Heading

(AR) This is the <h1>.

### 04 Heading

- (AR) This is an <h3>.

- (AR) The screen reader should say something like "filter by {text}" (i.e. "filter by vehicle type").

### 05 Filters

- (AR) Please make the filter area a landmark, and maybe call it something like "filters". Thus it should have a hidden heading level 2, something like "filters".

- On click of a filter, the contents of the page update, such that the only content that will display is that which contains the selected filter.

- Selected state: blue with white text.

- Unselected state: white / light grey with blue outline.

- (AR) For screen reader users, the screen reader should say something like "[Button] filter by {filter name}".

- (AR) For screen reader users, once a filter is selected or unselected, we will provide an update as to how many cards are now being displayed. Thus the user will hear something like "now showing x cards" where "x" is the number of cards showing (i.e. that pertain to the selected filter).

### 06 Clear All

- On click of this link, all selected filters will be removed and the page will be reset to its default state.

- If no filters have been selected, then this button is disabled. Once one filter has been selected, it becomes enabled.

- (AR) For screen reader users, the screen reader should say something like "[Button] Clear All Filters".

### 07 More Filters

- On click of this element, the page will display additional filters and the field of automotive tiles will be pushed down to accommodate the additional space needed.

- (AR) For screen reader users, the screen reader should

# Detailed annotations using numbers and margin comments

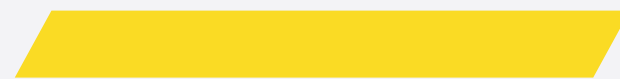


This is NOT a substitute  
for **communicating** with  
people!

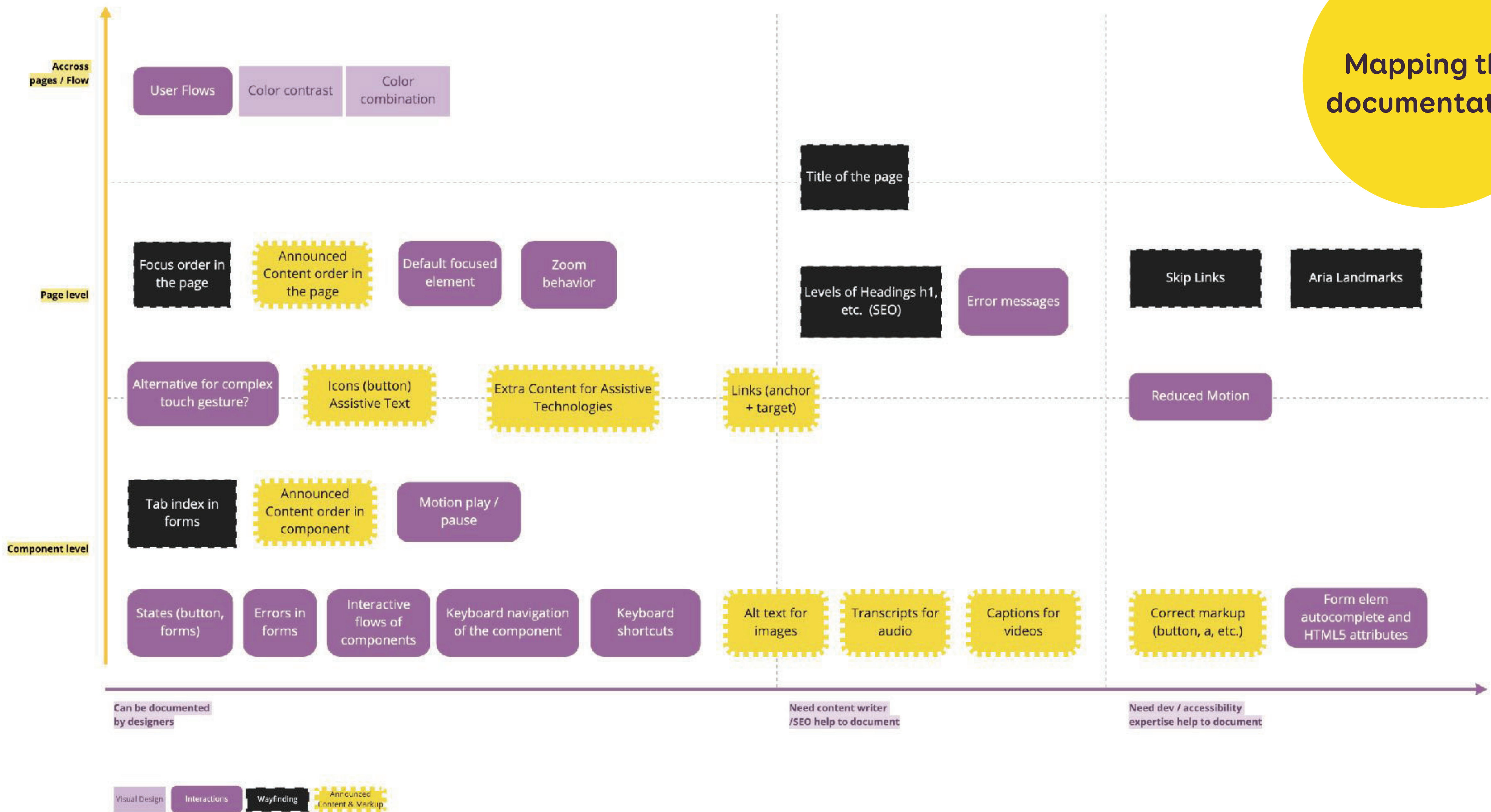




# What exactly can or should designers document?



# Mapping the documentation





# Colors, borders and textures

## Primary

AAA #024f60	AA #0f7e96	AA big text #2ca3bc
<div>#024f60</div> <div>Lorem kitten texte color.</div>	<div>#0f7e96</div> <div>Lorem kitten texte color.</div>	<div>#df3603</div> <div>Lorem kitten texte color.</div>

## Secondary

AAA #631737	AAA #a5275c	AA #bc537c
<div>#631737</div> <div>Lorem kitten texte color.</div>	<div>#a5275c</div> <div>Lorem kitten texte color.</div>	<div>#bc537c</div> <div>Lorem kitten texte color.</div>

## Dark grays

AAA #1a1a1a	AA #303030	AA #747474
<div>#1a1a1a</div> <div>Lorem kitten texte color.</div>	<div>#303030</div> <div>Lorem kitten texte color.</div>	<div>#747474</div> <div>Lorem kitten texte color.</div>

## Light grays

AAA #cbcacaca	AA #e4e4e3	AA #f2f2f2
------------------	---------------	---------------

Dark text #222222

Text #727272



Color Palette & Contrast



Contrast Grid

Test many foreground and background color combos for compliance with WCAG 2.0 minimum contrast.

Include one color per line, with an optional comma-separated label.

Rows

- #FFFFFF, White
- #FEDC2A, Yellow
- #5A3B5D, Dark Purple
- #8B538F, Light Purple
- #C3A3C9, Lightst purple
- #777777, Gray
- #555555, Darker Gray

Columns

- #FFFFFF, White
- #FEDC2A, Yellow
- #5A3B5D, Dark Purple
- #8B538F, Light Purple
- #C3A3C9, Lightst purple
- #777777, Gray
- #555555, Darker Gray
- #444444, Darker Darker Gray
- #333333, Fifty Shades of darker

Use the same rows & columns values

Tile Size

S  
(80×80)

M  
(100×100)

L  
(150×150)

Show

AAA

AA

AA18

DNP

Background \ Text	White #FFFFFF	Yellow #FEDC2A	Dark Purple #5A3B5D	Light Purple #8B538F	Lightst purple #C3A3C9	Gray #777777	Darker Gray #555555	Darker Darker Gray #444444	Fifty Shades of darker gray #333333	Dorian Gray? #222222
White #FFFFFF		Text DNP 1.3	Text AAA 9.4	Text AA 5.6	Text DNP 2.2	Text AA18 4.4	Text AAA 7.4	Text AAA 9.7	Text AAA 12.6	Text AAA 15.9
Yellow #FEDC2A	Text DNP 1.3		Text AA 6.9	Text AA18 4.1	Text DNP 1.6	Text AA18 3.3	Text AA 5.5	Text AAA 7.1	Text AAA 9.3	Text AAA 11.7
Dark Purple #5A3B5D	Text AAA 9.4	Text AA 6.9		Text DNP 1.6	Text AA18 4.2	Text DNP 2.1	Text DNP 1.2	Text DNP 1	Text DNP 1.3	Text DNP 1.6
Light Purple #8B538F	Text AA 5.6	Text AA18 4.1	Text DNP 1.6		Text DNP 2.5	Text DNP 1.2	Text DNP 1.3	Text DNP 1.7	Text DNP 2.2	Text DNP 2.8
Lightst purple #C3A3C9	Text DNP 2.2	Text DNP 1.6	Text AA18 4.2	Text DNP 2.5		Text DNP 2	Text AA18 3.3	Text AA18 4.3	Text AA 5.6	Text AAA 7.1
Gray #777777	Text AA18 4.4	Text AA18 3.3	Text DNP 2.1	Text DNP 1.2	Text DNP 2		Text DNP 1.6	Text DNP 2.1	Text DNP	Text
Darker Gray #555555	Text AAA 7.4	Text AA 5.5	Text DNP 1.2	Text DNP 1.3	Text AA18 3.3	Text DNP 1.6		Text DNP 1.3	Text DNP	Text

AAA

 Pass, AAA (7+)

AA18

 Pass, Large Text Only (3+)

DNP

 Does Not Pass

A contrast grid matrix to help me compare ratios

# WCAG for designers



Here's a checklist I'm working on to help ensure the products I design comply with the Web Content Accessibility Guidelines (WCAG).

I appreciate accessibility is more than just a checklist of WCAG criteria but it's a useful place to start! I'm always learning so if you spot any obvious errors or omissions [get in touch](#) and help me out.

## Colour

### Use of Colour (A)



Don't rely on colour alone to communicate meaning or to distinguish visual elements. People see colours differently, are colour blind or have difficulty telling different colours apart.

#### How can I use colour thoughtfully?

- Provide an additional indicator to colour - a visible border, label, underline or icon.
- If charts and graphics rely on colour then add distinctive, non-colour differences like hatching patterns or directly applied labels.
- [Learn about colour blindness](#)
- Install this [colour blindness simulator](#) to check your designs.

WCAG guidelines 1.4.1

### Contrast minimum (AA)



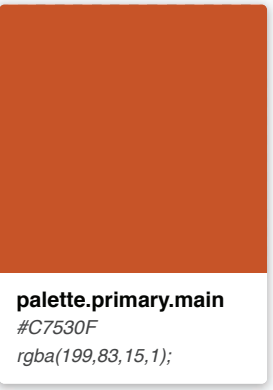
Giving text a strong contrast colour against the background makes it easier for

Don't forget to explain the ratios (3:1, 4:), what AA, AAA, large and small text mean to the design team somewhere!





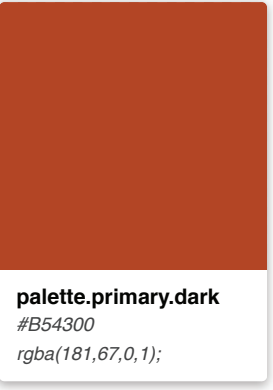
Default



The default state of the button when there’s no current user action.



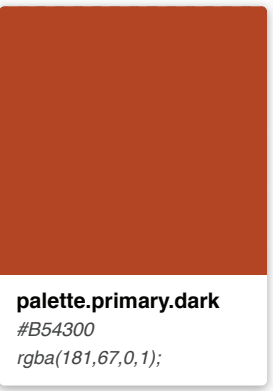
Hover



The state when the user’s mouse hovers the element



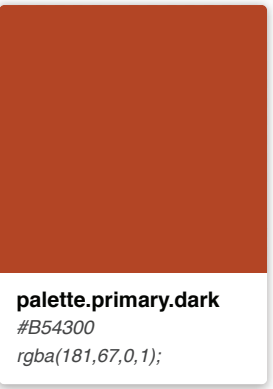
Focus



The state when the button gets the focus state (for example via keyboard navigation)  
Default browser outline focus (design depends on the browser)



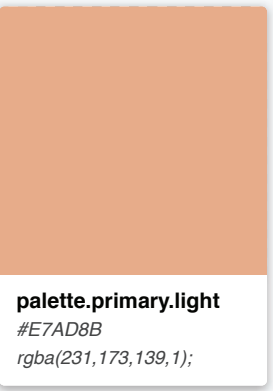
Active



The state when the user presses the button



Disable



The state when it is disabled and the user can’t click on it



Interactive states  
(buttons, form  
elements, etc.)

Checkboxes

Use checkboxes when users can select multiple options in a list

Use checkboxes when there’s a on/off state

The checkbox icon is 20x20 px

Default	<input type="checkbox"/> Value	Value <input type="checkbox"/>
Focus	<input type="checkbox"/> Value	Value <input type="checkbox"/>
Checked	<input checked="" type="checkbox"/> Value	Value <input checked="" type="checkbox"/>
Disabled	<input type="checkbox"/> Value	Value <input type="checkbox"/>
Disabled checked	<input checked="" type="checkbox"/> Value	Value <input checked="" type="checkbox"/>
Indeterminate	<input type="checkbox"/> Value	Value <input type="checkbox"/>
Disabled Indeterminate	<input type="checkbox"/> Value	Value <input type="checkbox"/>

Radio buttons

Use radio buttons when user can only select one option in a list of options

The radio button icon is 20x20 px

Default	<input type="radio"/> Value	Value <input type="radio"/>
Focus	<input type="radio"/> Value	Value <input type="radio"/>
Checked	<input checked="" type="radio"/> Value	Value <input checked="" type="radio"/>
Disabled	<input type="radio"/> Value	Value <input type="radio"/>
Disabled checked	<input checked="" type="radio"/> Value	Value <input checked="" type="radio"/>



Component

Label 12px

Value 16px

Info / error / warning / success 12px

Default

Label

Focus

Label

|

Filled

Label

Value

Readonly

Label

Value

Error

Label

Value

Message

Success

Label

Value

Message

Info

Label

Value

Message

Usage in the search result page  
to filter out by year range

Signature Year

From

YYYY

To

YYYY

Reset

Apply

Signature Year

From

201n

Please enter a year number  
(for example 2022)

To

YYYY

Reset

Apply

**Error case:** if user enters something that is not a year with 4 digits and if users enters letters in that field

Status of form  
elements: error,  
success, etc.

Send me a message  
(All fields are required)

Who are you?  
Name, company, how should I call you.

1

What is your request about?  
Conference/Workshop invitation, collaboration, etc.

2

Your email address  
So that I can recontact you.

3

Your message

4

Send The Email

Please note that I do **NOT** accept guest blogs and artificial link building. Don't expect an answer for those.

Focus order in form elements

form

Send me a message  
(All fields are required)

Who are you?  
Name, company, how should I call you.

1

What is your request about?  
Conference/Workshop invitation, collaboration, etc.

2

Your email address  
So that I can recontact you.

3

Your Message

4

5 Send the Email

Please note that I do **NOT** accept guest blogs and artificial link building. Don't expect an answer for those.

Contact form

- 1 Name: Name  
Role: —  
Value: —  
Props: —
- 2 Name: Subject  
Role: —  
Value: —  
Props: —
- 3 Name: Email  
Role: —  
Value: —  
Props: —
- 4 Name: Message  
Role: —  
Value: —  
Props: —
- 5 Name: Submit  
Role: —  
Value: —  
Props: —

Atty - Focus Orderer

Home Current Annotations About

1 Name

Role: —

Value: —

Props: —

2 Subject

Role: —

Value: —

Props: —

3 Email

Role: —

Value: —

Props: —

4 Message

Role: —

Value: —

Props: —

5 Submit

Role: —

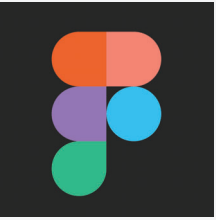
Value: —

Props: —

Back

Test

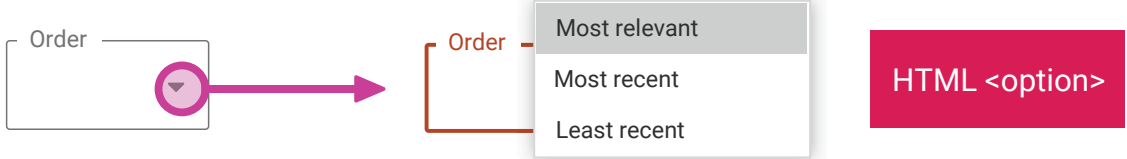
Add



# More form accessibility experts can help with

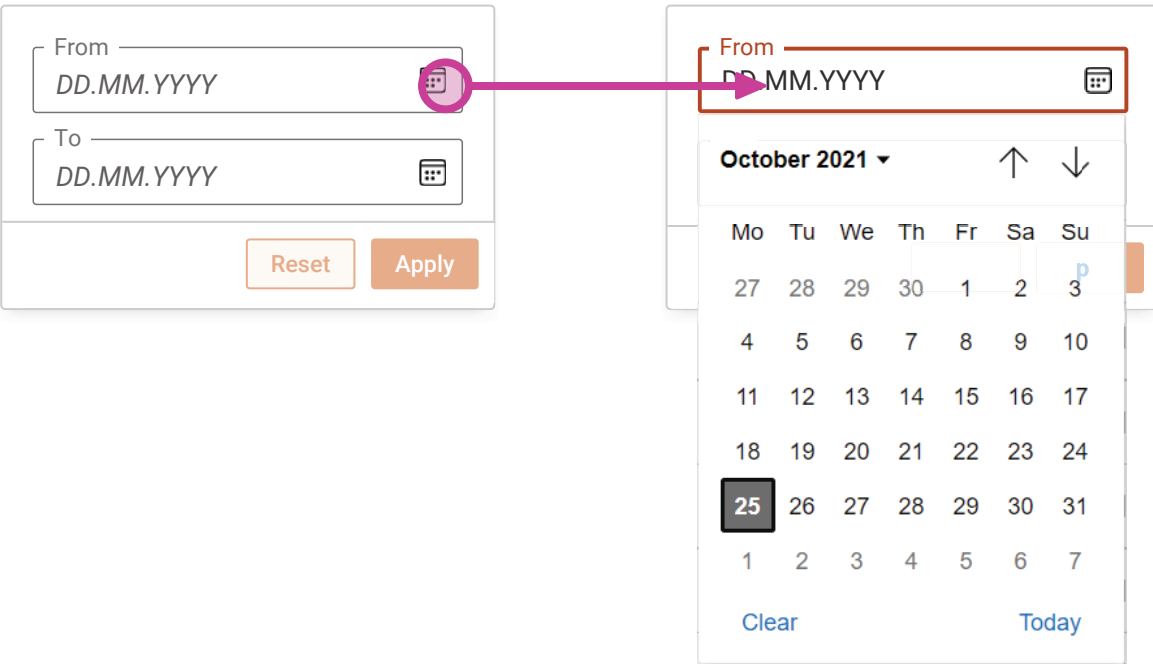
- Correct HTML5 type
- Autocomplete, autofill, etc.
- Specific “invisible labels”
- Legends and field grouping markup
- Default focused elements when page opens

Select



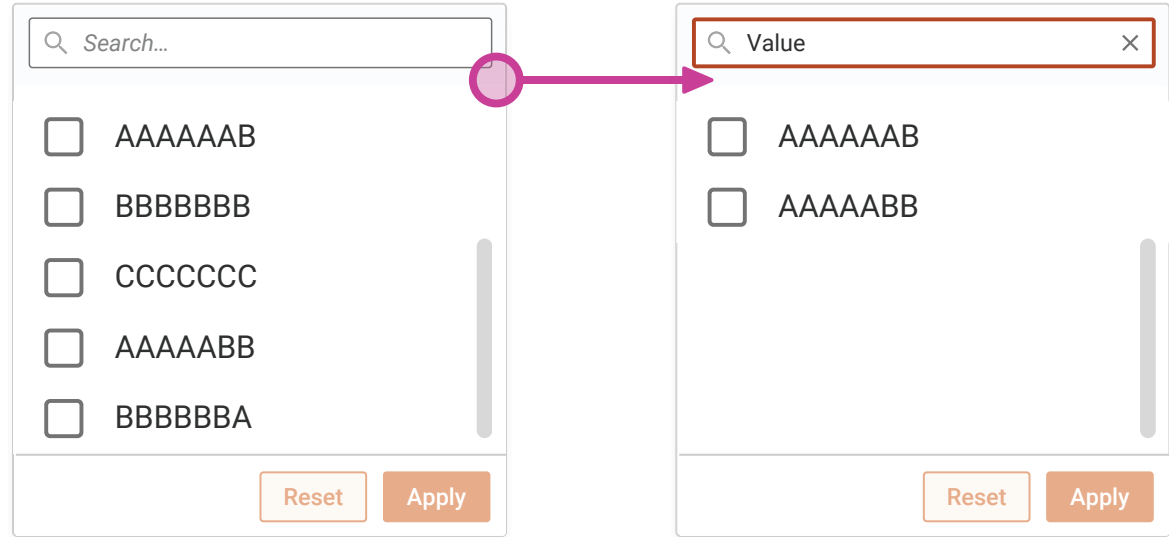
We use native HTML option when it opens

Date range filter



HTML5 date picker.  
Note that the calendar icon might change depending on browser.  
We can't change its color (that color is not in the styleguide but this is okay)

Filter with search



HTML5 search input.  
Note that the x style might change depending on browser

Checkboxlist Filters Interaction flow

We use the checkbox list with no filter at the top where there are seven or less items in the list

**MOUSE:**  
When the user clicks on the trigger (button or carret for tables), it opens the filter box.

Status ▾

☐ AAAAAAB

☐ AAAAABB

☐ BBBBBBA

☐ BBBBBBB

☐ CCCCCC

☐ DDDDDDD

Status ▾

☐ AAAAAAB

☐ AAAAABB

☐ BBBBBBA

☐ BBBBBBB

☐ CCCCCC

☐ DDDDDDD

Status ▾

☒ AAAAAAB

☐ AAAAABB

☐ BBBBBBA

☐ BBBBBBB

☐ CCCCCC

☐ DDDDDDD

Status ▾

☒ AAAAAAB

☐ AAAAABB

☐ BBBBBBA

☐ BBBBBBB

☐ CCCCCC

☐ DDDDDDD

Status (2) ▾

Filtered results

Once user hits the apply button (click or tab to focus + enter) the filter closes.  
The filter button changes to the active filter style.  
The number of active filters is shown (N) next to the filter name.  
The filter is also added to the active filter list next to the title

Interactive flows: how should this component work



Checkboxlist Filters Interaction flow

We use the checkbox list with no filter at the top where there are seven or less items in the list

**MOUSE:**  
When the user clicks on the trigger (button or carret for tables), it opens the filter box.

Status ▾

☐

AAAAAAB

☐

AAAAABB

☐

BBBBBBA

☐

BBBBBBB

☐

CCCCCCC

☐

DDDDDDD

Reset

Apply

Status ▾

☐

AAAAAAB

☐

AAAAABB

☐

BBBBBBA

☐

BBBBBBB

☐

CCCCCCC

☐

DDDDDDD

Reset

Apply

The style of the list item changes on hover

Status ▾

☒

AAAAAAB

☐

AAAAABB

☐

BBBBBBA

☐

BBBBBBB

☐

CCCCCCC

☐

DDDDDDD

Reset

Apply

The reset button becomes active once the user checked any box.

Status ▾

☒

AAAAAAB

☐

AAAAABB

☐

BBBBBBA

☐

BBBBBBB

☐

CCCCCCC

☐

DDDDDDD

Reset

Apply

Status (2) ▾

Filtered results

Once user hits the apply button (click or tab to focus + enter) the filter closes.  
The filter button changes to the active filter style.  
The number of active filters is shown (N) next to the filter name.  
The filter is also added to the active filter list next to the title

<enter>

<space>

**KEYBOARD:**  
If the user hits **<enter>** / **<space>** on the trigger (button or carret for tables)

<esc>

**<escape>** closes the box

Status ▾

☐

AAAAAAB

☐

AAAAABB

☐

BBBBBBA

☐

BBBBBBB

☐

CCCCCCC

☐

DDDDDDD

Reset

Apply

The first element in the list gets the focus when the list is open via space/enter

Status ▾

☐

AAAAAAB

☐

AAAAABB

☐

BBBBBBA

☐

BBBBBBB

☐

CCCCCCC

☐

DDDDDDD

Reset

Apply

↑

**<keydown>**: the next element is highlighted (focus)

↓

**<keyup>**: the previous element is highlighted (focus)

Status ▾

☒

AAAAAAB

☐

AAAAABB

☐

BBBBBBA

☐

BBBBBBB

☐

CCCCCCC

☐

DDDDDDD

Reset

Apply

If the user hits **<space>**, this element is checked. It still keeps the focus highlight until the user focuses another element.

Status ▾

☒

AAAAAAB

☐

AAAAABB

☐

BBBBBBA

☒

BBBBBBB

☐

CCCCCCC

☐

DDDDDDD

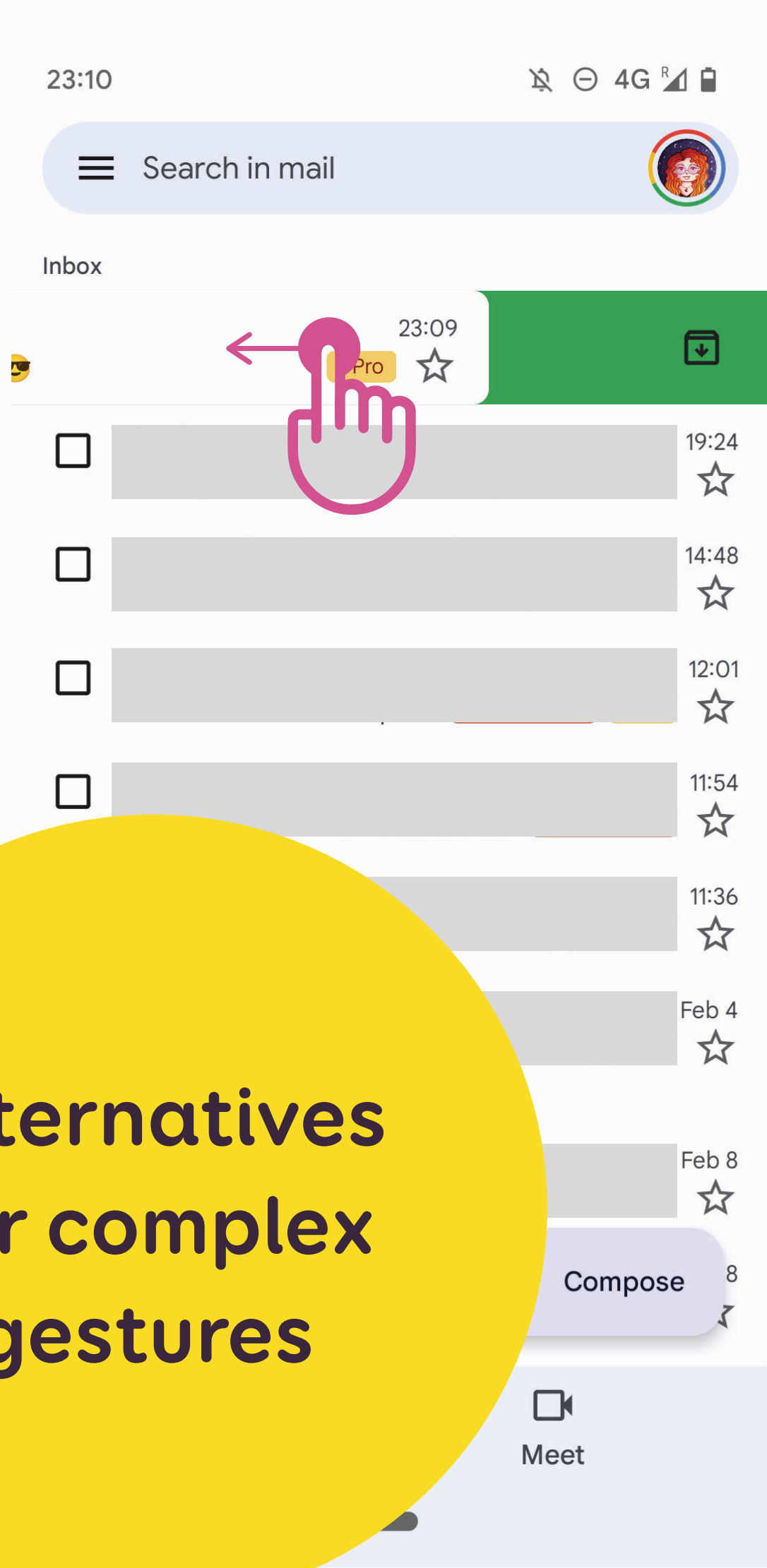
Reset

Apply

If the user hits **<tab>** it gives the focus to the "Reset" then "Apply" button.  
Then they can press **<enter>** / **<space>** to apply the filter

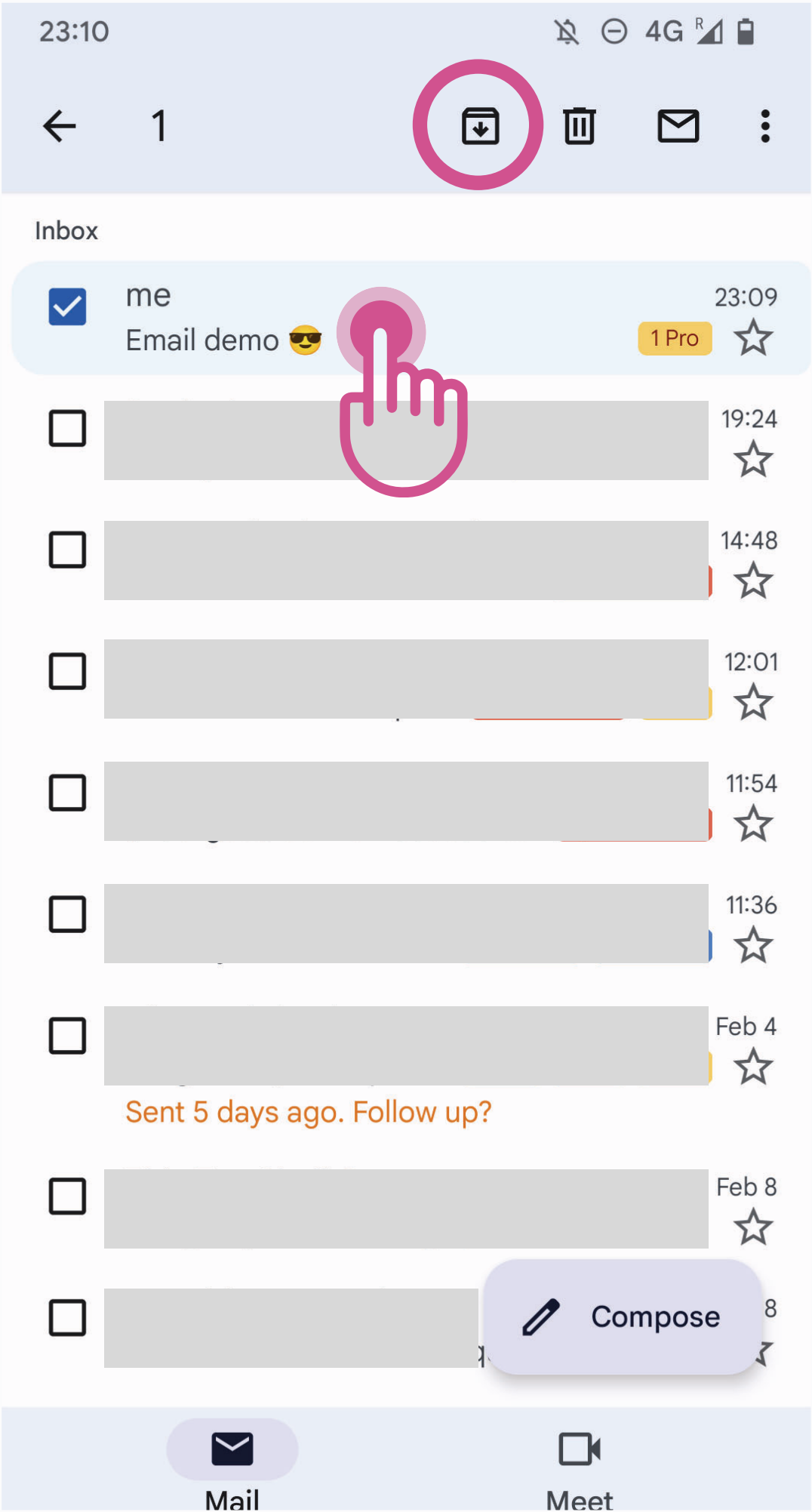
How should it work with keyboard navigation?

Complex gesture — swipe right to archive



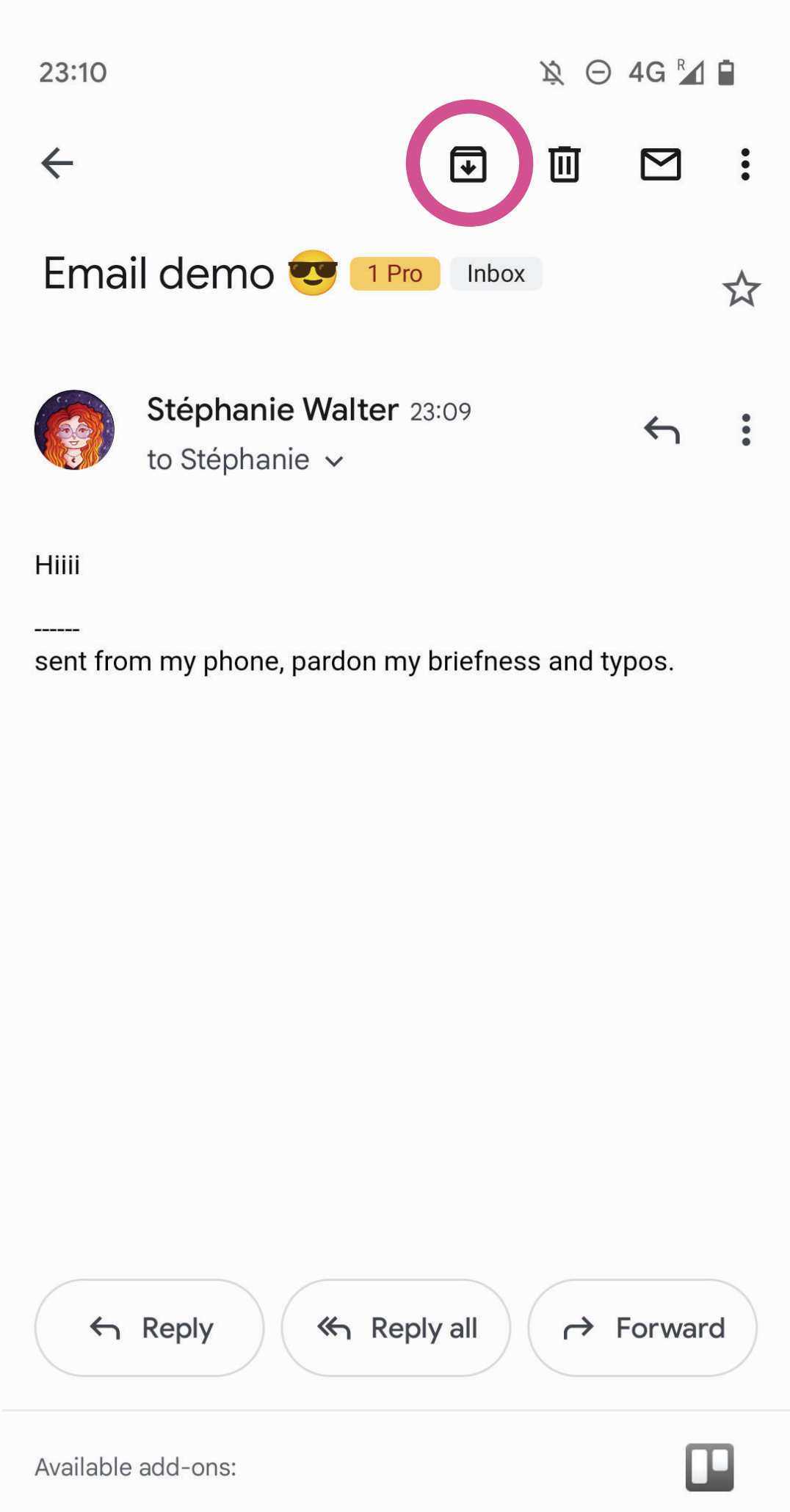
Alternative:

- long press to show the toolbar
- then press the “archive” icon at the top



Alternative:

- open the mail details
- press the “archive” icon at the top



Alternatives  
for complex  
gestures



Summary goes hereJelly beans soufflé chocolate lollipop. Toffee muffin biscuit biscuit jujubes apple pie chocolate cake donut. Bonbon sugar plum macaroon donut cake biscuit. Dessert biscuit jelly bear claw icing dan...

Prep:  
3 hours

Serving:  
4-6 persons

Cooking:  
25 min

Cost:  
3€/person

Ingredients

- 3¼ cups (455 g) gluten free flour
- 1 tbsp plus 1 tsp (29 g) brown sugar
- 2 tsp kosher salt
- 1/2 cube of yeast
- 2½ cups (400 ml) whole almond milk

- 1 Alt="Slices of pizza with a lot of melted cheese, tomato sauce, ham and green olives"
- 2 Save, share and rate: presentation icons that don't need to be vocalized by assistive technogly if the button is

What should the assistive technology announce for those images?

<div><div>Title of the tile</div><div><div>1</div><div>2</div></div></div>			
<div><div>To be allocated: 40.000.000,00 EUR</div><div>Adjusted amount: 200.000,00 EUR</div></div>			
	Allocations	Percentage	Amount
	230	62,50%	24.999.594,45 EUR
	0	0,00%	0,00 EUR
	25	2,50%	1.000.000,00 EUR

Announced  
text for “icon  
buttons”

- 1

Alt = “View Graph”
- 2

Alt = “View Tables”



Alt="Slices of pizza with a lot of melted cheese, tomato sauce, ham and green olives"

1



1

2

GLUTEN FREE MAIN DISH

3

## Gluten Free Pan Pizza with a bigger name

4

It really is possible to make excellent gluten free pizza at home in your own oven with our different recipes and techniques

 Save

5



1

5

 Save

2

GLUTEN FREE MAIN DISH

3

## Gluten Free Pan Pizza with a bigger name

4

It really is possible to make excellent gluten free pizza at home in your own oven with our different recipes and techniques

Announced  
content order

Navigation states

Default

:hover

:focus

:active



The default color is #ffffff with 0.8 of opacity

When users hover the item, the color is #ffffff with no opacity (1)  
The background changes for a #303030 10% opacity

We use the material UI ripple effect for :focus (when users tabs) the link

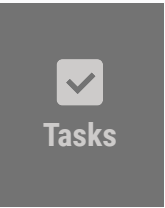
We use the material UI ripple effect for :active (when users click) on the link

Extra content  
for assistive  
technologies

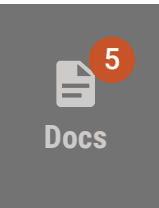
Navigation Icons Accessibility Guidelines for Notifications



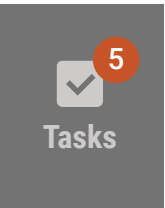
Screen reader should read: “**No new documents in my documents**”



Screen reader should read: “**No new tasks in my tasks**”



Screen reader should read: “**5 new documents in my documents**”  
On the notification number, role=presentation to avoid reading it twice



Screen reader should read: “**5 new tasks in my tasks**”  
On the notification number, role=presentation to avoid reading it twice

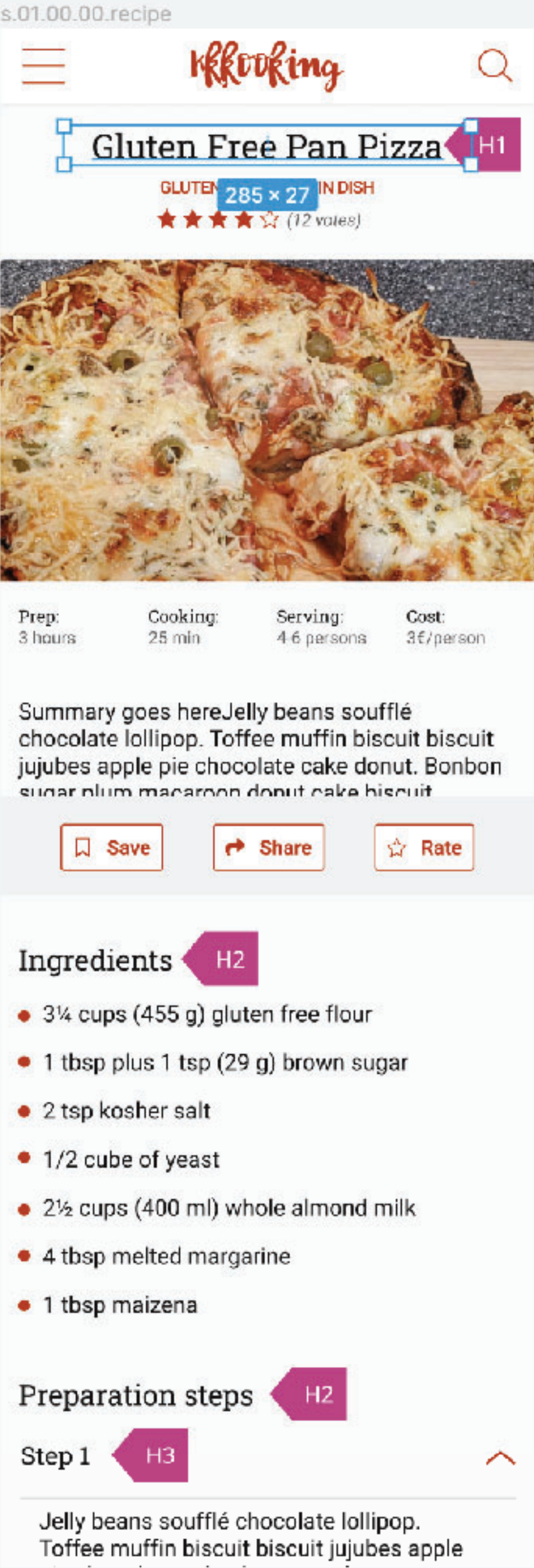


This ticket is a placeholder to centralize the documentation of page titles. The titles are being implemented as the pages are being converted to the new architecture.

# Title of the page



Headings in the page



Design Prototype Inspect

|≡ ≠ ≡| ≡̅ + ≡̅ |≡|

X 0 Y 0

W 285 H 27

0°

Constraints



Layer

Pass through 100%

Ag H1/s/center

Text Styles

Search

Ag default · 16/Auto

Ag placeholder · 16/Auto

H1/s

Ag left · 24/27

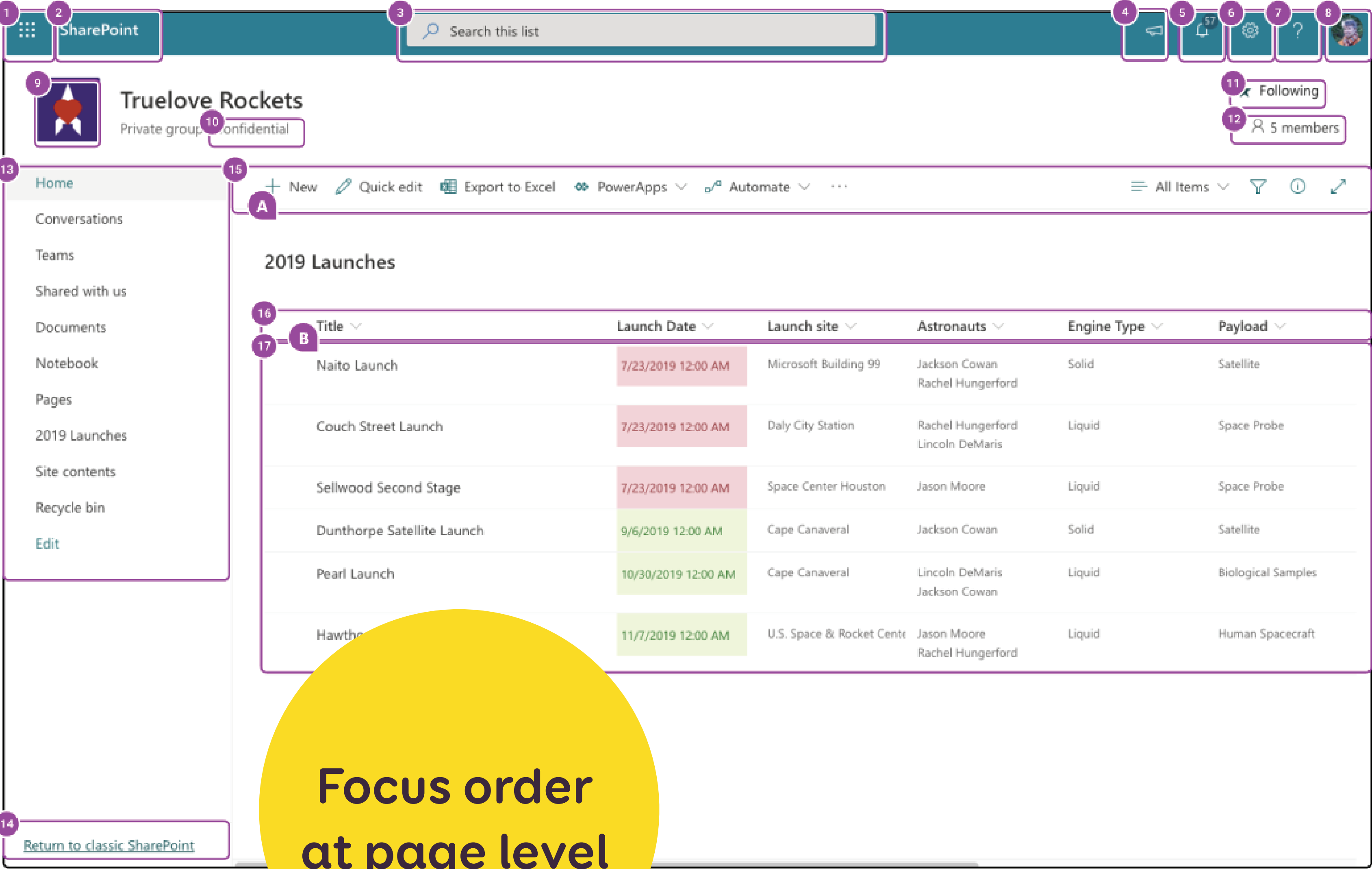
Ag center · 24/27

H2/s

Ag left · 20/27

H3/s

Ag left · 18/27



Suite header

- 1 Name: Office apps  
Role: Button
- 2 Name: SharePoint  
Role: Link
- 3 Name: Search  
Role: Combobox
- 4 Name: Next steps  
Role: Button
- 5 Name: Notifications  
Role: Button  
Description: 57 alerts
- 6 Name: Settings  
Role: Button
- 7 Name: Help  
Role: Button
- 8 Name: Account  
Role: Button  
Description: Kat Larsson  
Props: Haspopup

Main content

- 13 Name: Site navigation  
Role: List
- 14 Name: Return to classic SharePoint  
Role: Link
- 15 Name: Command bar  
Role: Menu
  - A Name: New item  
Role: Button
- 16 Name: Column header  
Role: Table  
Props: Has 1 row, 7 columns
  - B Name: Title  
Role: Menu
- 17 Name: 2019 Launches  
Role: Table  
Props: Has 6 rows, 7 columns

Site header

- 9 Name: Truelove Rockets Home  
Role: Link
- 10 Name: Confidential rating info  
Role: Link
- 11 Name: Follow  
Role: Checkbox  
Value: Checked
- 12 Name: See all 5 site members  
Role: Button  
Value: Has popup

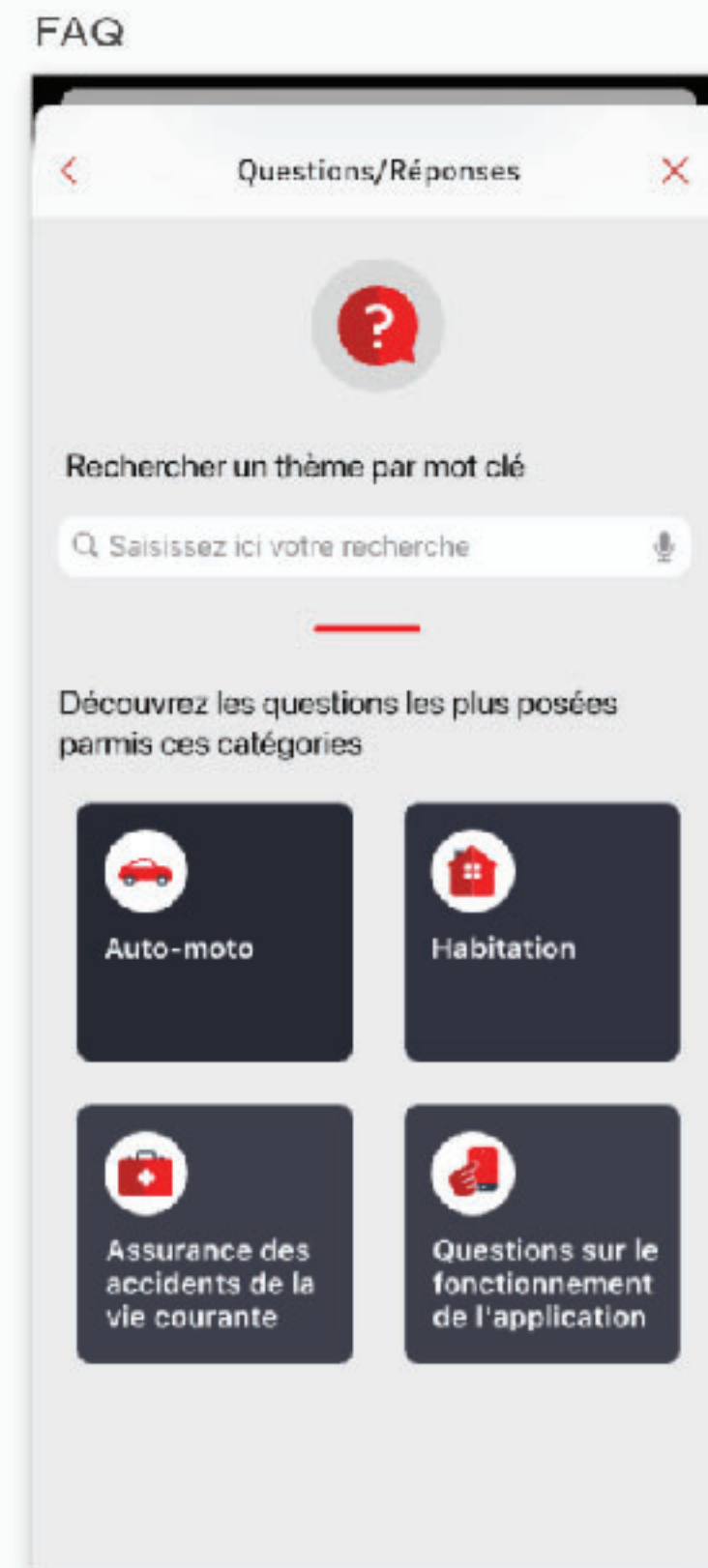
Focus order  
at page level



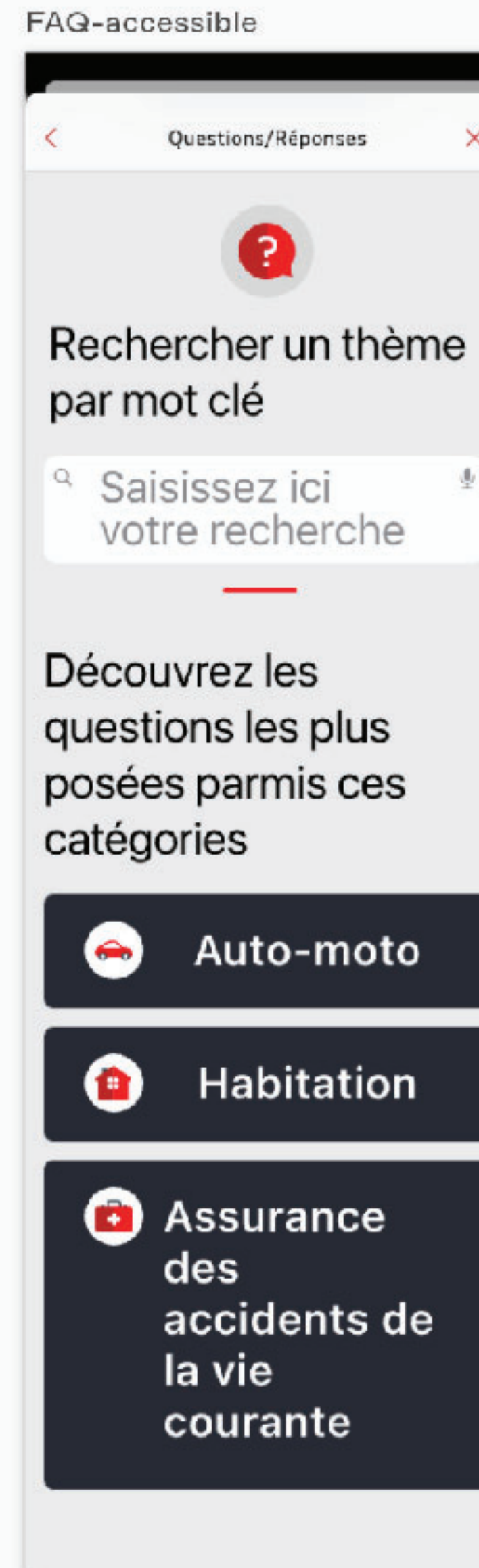
# Exemple de spec accessibilité (WIP)

Zoom  
behavior

Comportement zoom 100%



Comportement zoom 200%





## With help from Developers & Accessibility Experts

---



- Correct HTML semantic elements
- ARIA Roles
- ARIA states and properties

Principles	navigation
HTML	
Banner	
Complementary	
Contentinfo	
Form	
Main	
Navigation	

## Region Landmark

main

A **region** landmark is a perceivable section containing content that is relevant to a specific, author-specified purpose and sufficiently important that users will likely want to be able to navigate to the section easily and to have it listed in a summary of the page.

ARIA 1.2 Specification: [region landmark](#)

### Design Patterns

- A **region** landmark must have a label.
- If a page includes more than one **region** landmark, each should have a unique label.
- The **region** landmark can be used identify content that named landmarks do not appropriately describe.

HTML Techniques

ARIA Techniques

region

Use the HTML **section** element to define a **region** landmark.

**HTML Example: Using `section[aria-labelledby]` attribute**

Defines a label for each region using existing content on the page.

```
<main>
```

```
  <h1>title for main content area</h1>
```

```
  <section aria-labelledby="region1">
```

```
    <h2 id="region1">title for region area 1</h2>
```

## Landmarks

complementary

The following landmarks are defined on this page:

- Banner
- Complementary
- Contentinfo
- Main
- Navigation
- Region

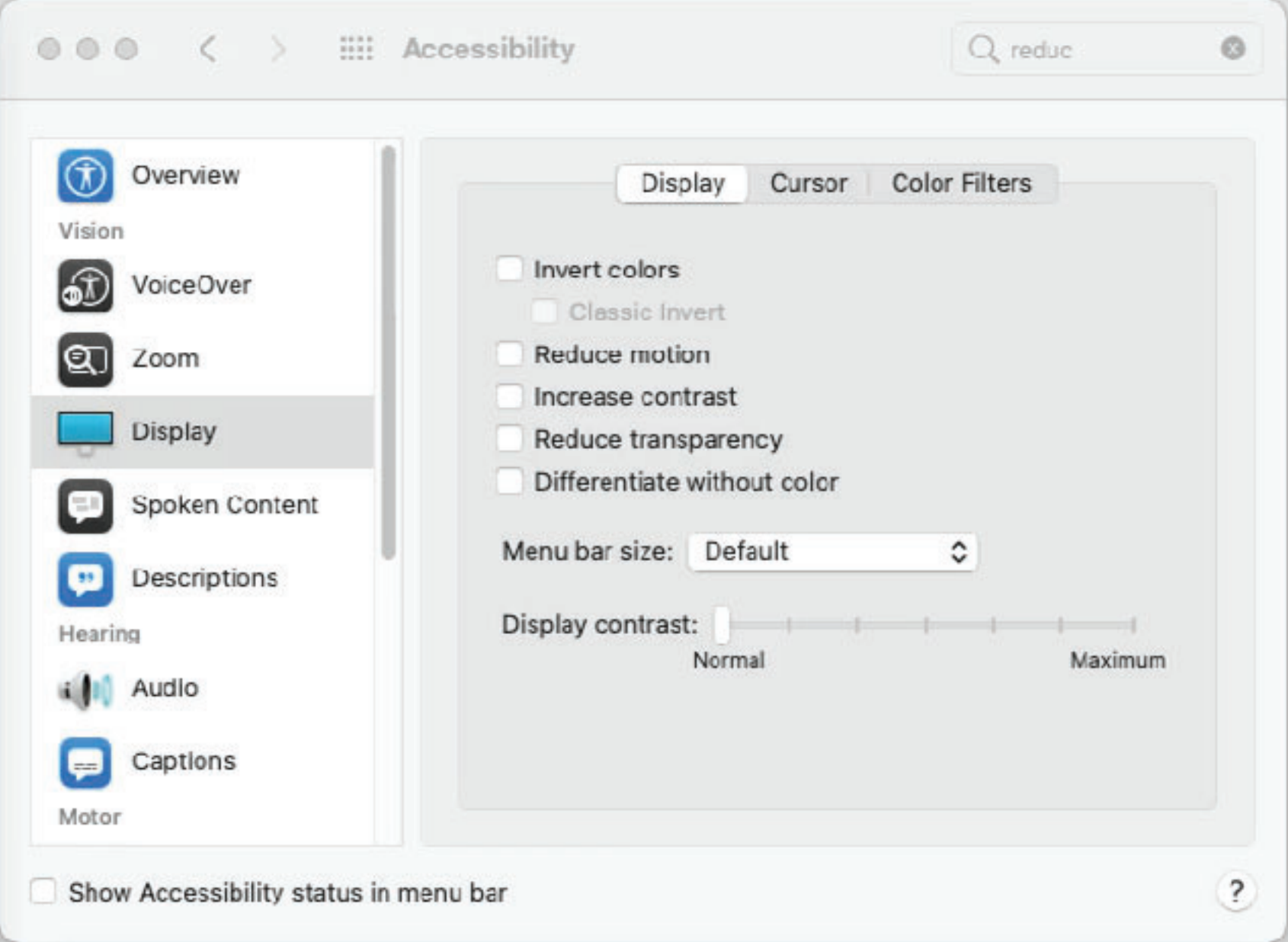
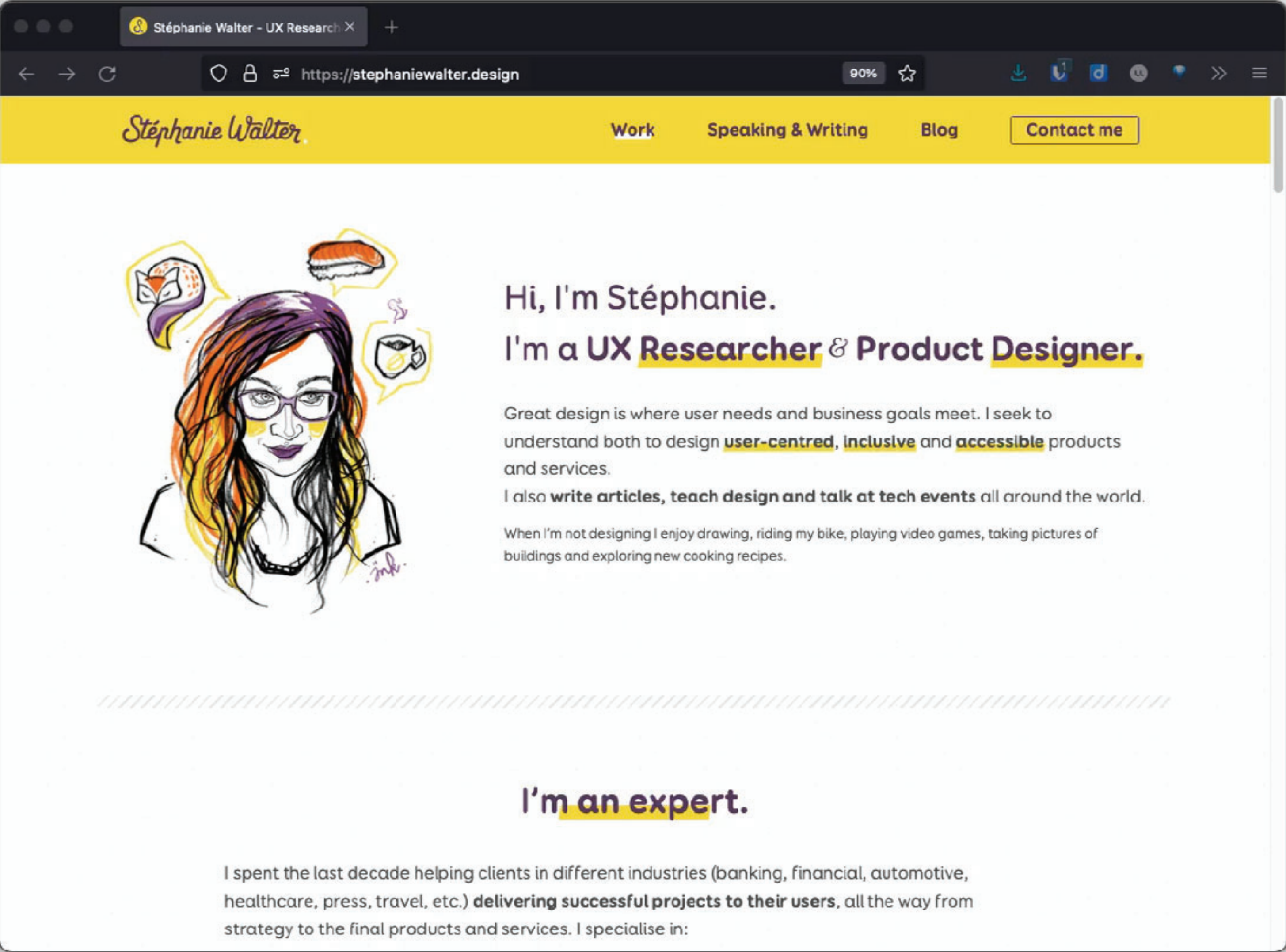
## Related Documents

complementary

- [WAI-ARIA Authoring Practices 1.2](#)
- [WAI-ARIA 1.2 Specification](#)
- [Accessible Name and Description Computation 1.2](#)
- [Core Accessibility API Mappings 1.2](#)
- [HTML Accessibility API Mappings \(latest editors draft\)](#)
- [HTML Specification](#)
- [ARIA in HTML](#)
- [Using ARIA in HTML](#)
- [WCAG Specification](#)

Landmarks  
and Skip to  
Content

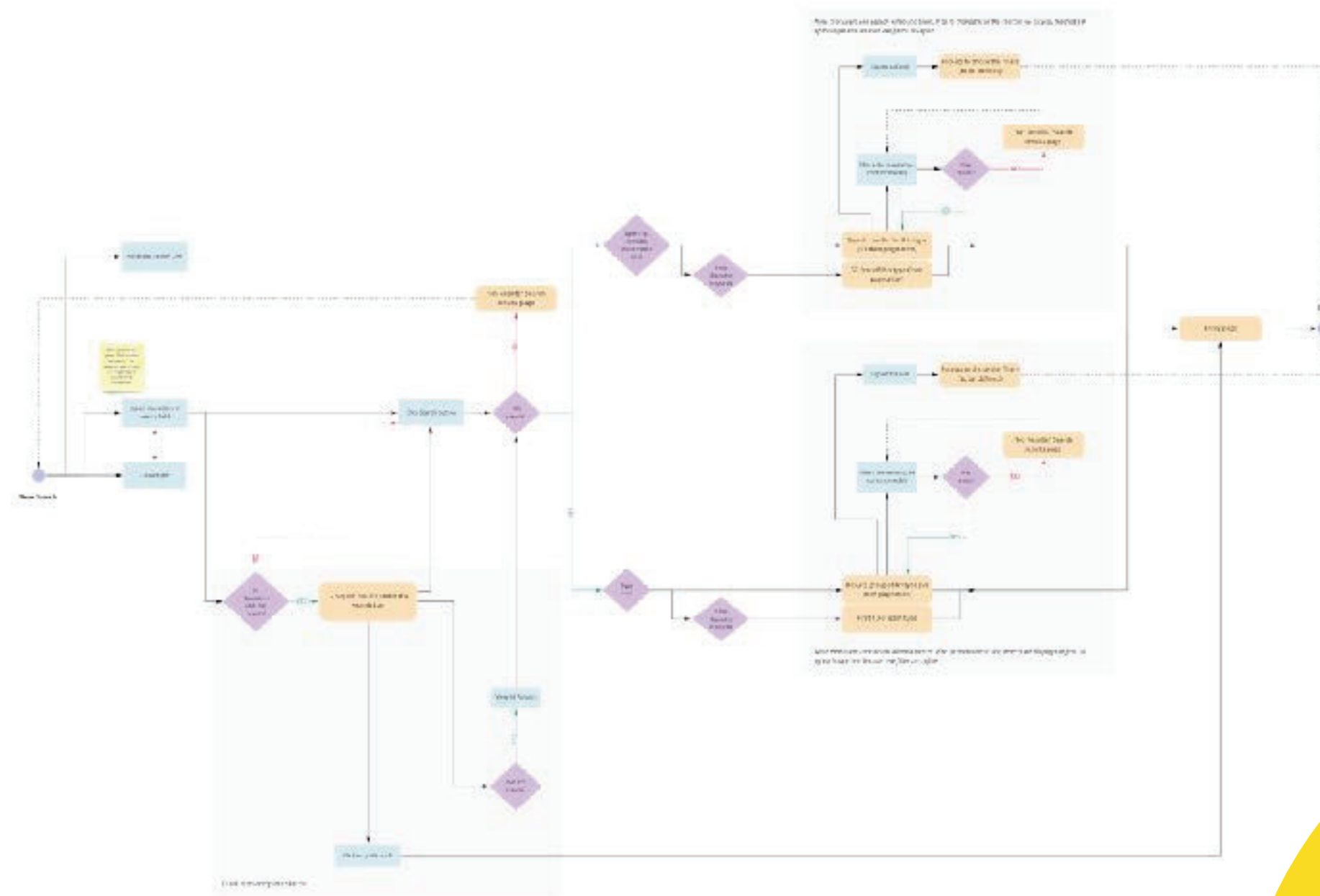




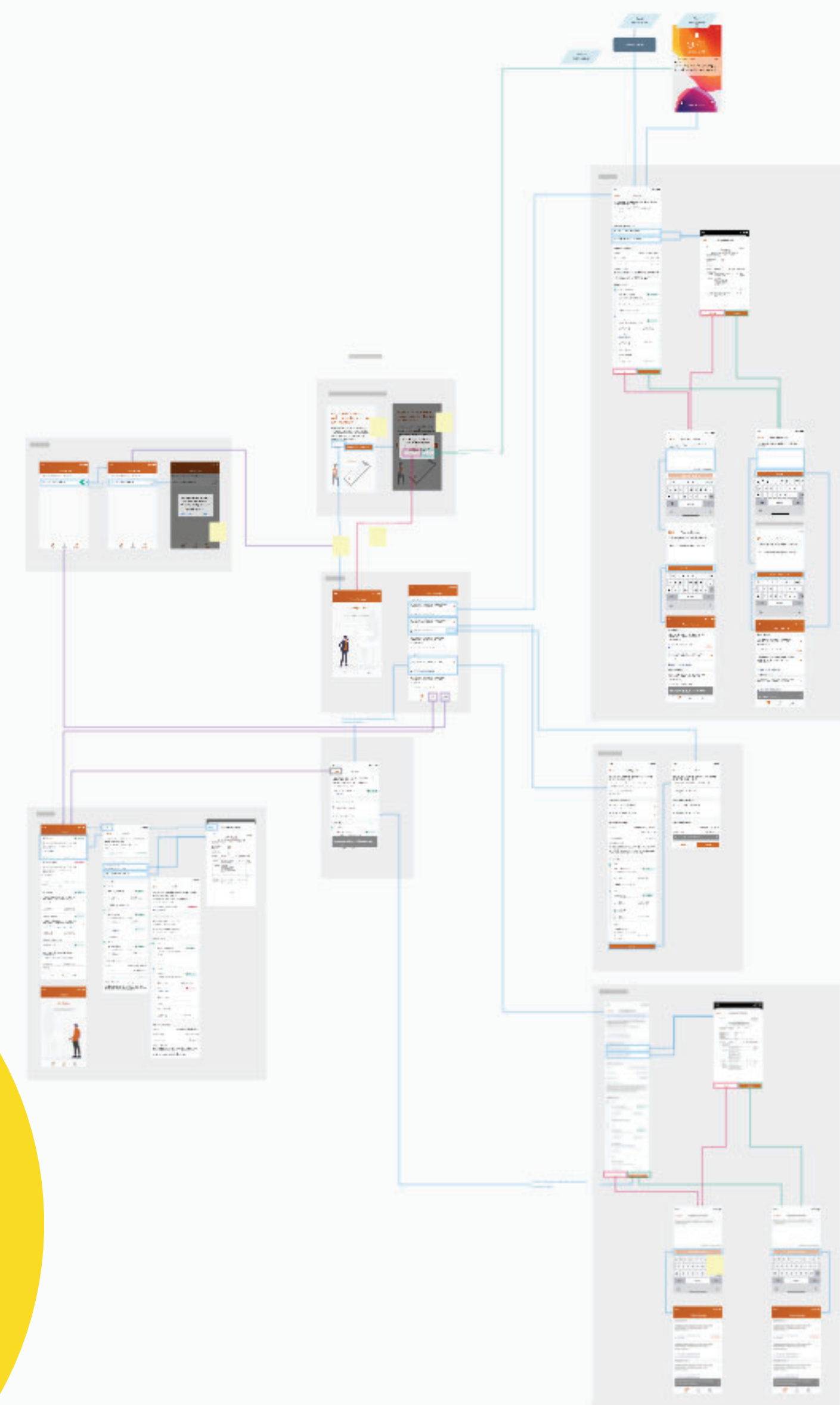
Reduced motion and animation



# User Flows



# Flows to document interactions between pages / views



## Screen flow



# Access to external documentation for

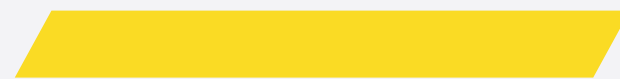
- Caption for videos
- Audio transcripts
- List of links/CTAs and anchors (often SEO excel guide)

E31			
	A	C	D
1	Type	To	Anchor Text
2	Hyperlink	<a href="https://stephaniewalter.d">https://stephaniewalter.d</a>	Go to the content
3	Hyperlink	<a href="https://stephaniewalter.d">https://stephaniewalter.d</a>	Contact me
4	Hyperlink	<a href="https://stephaniewalter.d">https://stephaniewalter.d</a>	Find out what type of structure would suit you
5	Hyperlink	<a href="https://stephaniewalter.d">https://stephaniewalter.d</a>	Find an internship (or an apprenticeship)
6	Hyperlink	<a href="https://stephaniewalter.d">https://stephaniewalter.d</a>	Reach out to UXers and build a network
7	Hyperlink	<a href="https://stephaniewalter.d">https://stephaniewalter.d</a>	Seek feedback and find a mentor
8	Hyperlink	<a href="https://stephaniewalter.d">https://stephaniewalter.d</a>	Stay away from “unsolicited redesigns
9	Hyperlink	<a href="https://stephaniewalter.d">https://stephaniewalter.d</a>	Find “volunteer” work to fill your portfolio: whe
10	Hyperlink	<a href="https://stephaniewalter.d">https://stephaniewalter.d</a>	Let them know the real value of your work
11	Hyperlink	<a href="https://stephaniewalter.d">https://stephaniewalter.d</a>	Have a sideproject
12	Hyperlink	<a href="https://stephaniewalter.d">https://stephaniewalter.d</a>	My advice on “speculative work” during the inte
13	Hyperlink	<a href="https://stephaniewalter.d">https://stephaniewalter.d</a>	Polish your first impression (resume, presentati
14	Hyperlink	<a href="https://stephaniewalter.d">https://stephaniewalter.d</a>	Work on your presentation skills
15	Hyperlink	<a href="https://stephaniewalter.d">https://stephaniewalter.d</a>	Be honest, don’t steal other people’s work, crec
16	Hyperlink	<a href="https://stephaniewalter.d">https://stephaniewalter.d</a>	Keep on growing as a designer (but don’t overd
17	Hyperlink	<a href="https://stephaniewalter.d">https://stephaniewalter.d</a>	Smoothly transition towards a UX role inside yo
18	Hyperlink	<a href="https://stephaniewalter.d">https://stephaniewalter.d</a>	Ask me Anything: How can I find my First UX Jol
19	Hyperlink	<a href="https://stephaniewalter.d">https://stephaniewalter.d</a>	Ask me Anything: How can I find my First UX Jol
20			
21			
22			
23			
24			
25			
26			
27			
28			
29			

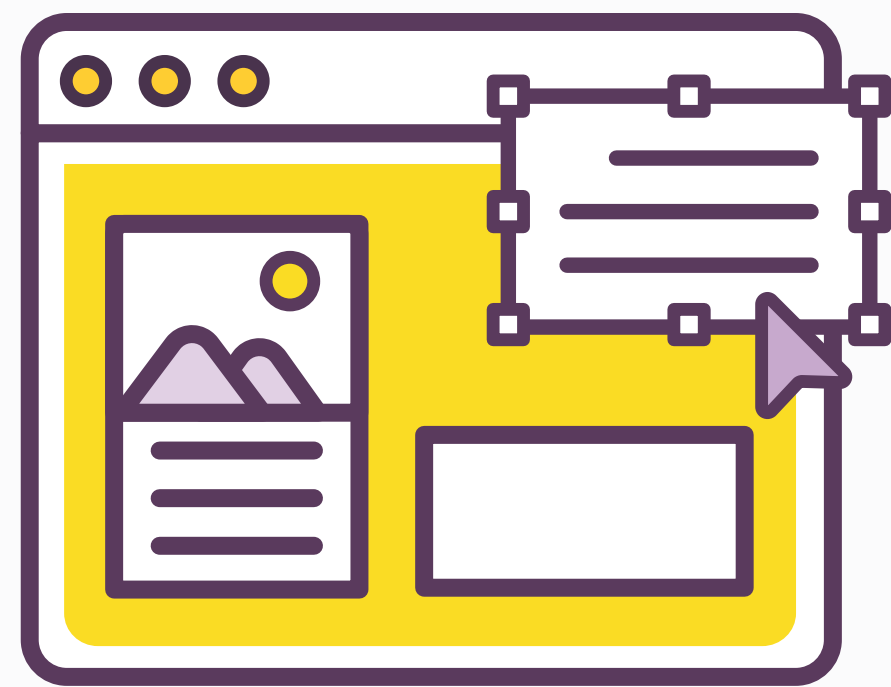




**What are the benefits of such  
documentation?**



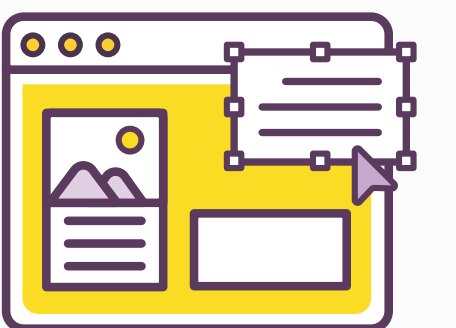




Benefits for **myself**,  
as designer:

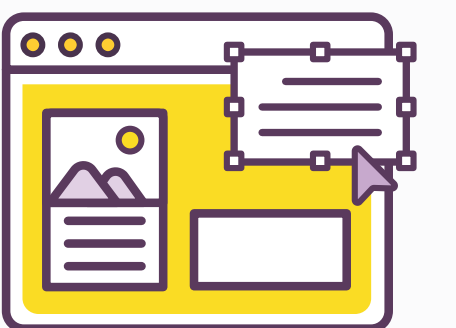
1.

To learn more about  
accessibility.



# 2.

It forces me to think about  
**different interactions**, beyond  
the “static” pixels I am working  
on.







# Benefits for the design-developer collaboration:

3.

Design documentation  
helps avoid some  
misinterpretations.

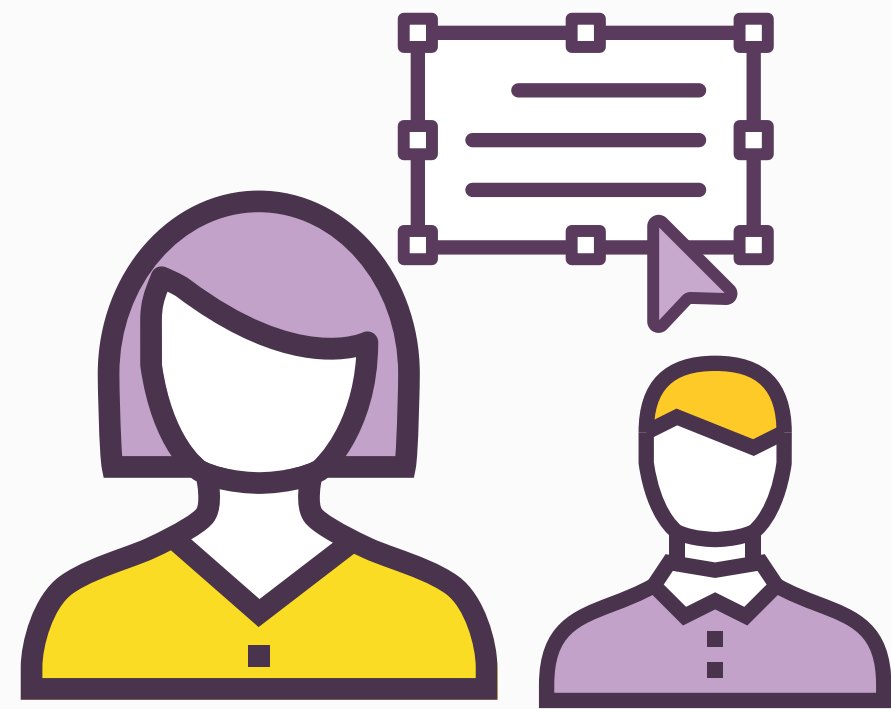


4.

It helps bring **consistency**  
to future pages and  
interactions.







# Benefits for fellow designers:

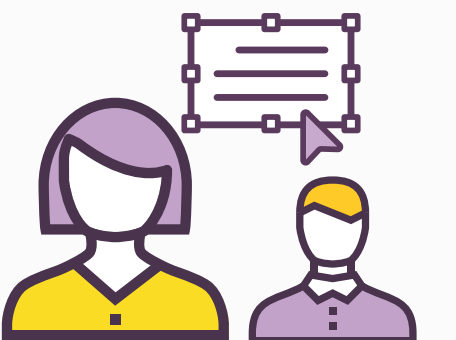
**5.**

A good **onboarding** tool for new designers, especially if they don't know about accessibility.



**6.**

Prior documentation helps  
**set standards** for what is  
expected for the next  
designs.





Benefits for everyone  
else in **the team**:



**7.**

**Start conversations** about accessibility within the company, encourages them to dig further.





It's a team work.  
**Communication** is the most  
important aspect here.



# Resources





Fluent Accessibility Notation

By Microsoft

87

Page: Samples

This design toolkit provides notations for documenting inclusive experiences. It has support for keyboard navigation as well as screen reader output.

More by this creator

Fluent Iconography

Microsoft Fluent System

S

Add a comment

0 comments

Accessibility Bluelines

Jeremy Elder

6

Accessibility Bluelines

Jeremy Elder

87

Page: Samples

This design toolkit provides notations for documenting inclusive experiences. It has support for keyboard navigation as well as screen reader output.

More by this creator

Fluent Iconography

Microsoft Fluent System

S

Add a comment

0 comments

Accessibility Bluelines

Jeremy Elder

6

Page: Samples

This design toolkit provides notations for documenting inclusive experiences. It has support for keyboard navigation as well as screen reader output.

More by this creator

Fluent Iconography

Microsoft Fluent System

S

Add a comment

0 comments

A11y Annotation Kit

By Indeed and Stephanie Hagadorn

387

Duplicate

Page: Samples

This design toolkit provides notations for documenting inclusive experiences. It has support for keyboard navigation as well as screen reader output.

More by this creator

Fluent Iconography

Microsoft Fluent System

S

Add a comment

0 comments

Some nice toolkits to help you document

Accessibility Bluelines

Jeremy Elder

6

Page: Samples

This design toolkit provides notations for documenting inclusive experiences. It has support for keyboard navigation as well as screen reader output.

More by this creator

Fluent Iconography

Microsoft Fluent System

S

Add a comment

0 comments

A11y Annotation Kit

By Indeed and Stephanie Hagadorn

387

Duplicate

Page: Samples

This design toolkit provides notations for documenting inclusive experiences. It has support for keyboard navigation as well as screen reader output.

More by this creator

Fluent Iconography

Microsoft Fluent System

S

Add a comment

0 comments



# Ressources and links



- ◉ Links in the slides
  - ◉ [Accessibility Annotation Examples from Karen Hawkins](#)
  - ◉ [Color ratio Matrix tool](#)
  - ◉ [WCAG for designers](#)
  - ◉ [A11y - Focus Orderer — Plugin for Figma](#)
  - ◉ [Fluent Accessibility Notation — Figma](#)
  - ◉ [ARIA Example: One Main Landmark](#)
  - ◉ [Reduced motion example on stephaniewalter.design](#)
  - ◉ [A11y Annotation Kit — Figma](#)
  - ◉ [Accessibility bluelines — Figma](#)
- ◉ [Accessibility Bluelines \(Sketch, Adobe XD, Invision Studio\)](#)
- ◉ More links to help you build and document better accessible designs:
  - ◉ [Color accessibility: tools and resources to help you design inclusive products](#)
  - ◉ [Inclusive Components](#)
  - ◉ [browsing with a desktop screen reader](#)
  - ◉ [browsing with a mobile screen reader](#)
  - ◉ [browsing with a keyboard](#)
  - ◉ [browsing with speech recognition](#)
  - ◉ [How to document the screen reader user experience](#)